



GRAY TOOLS

PROUDLY CANADIAN  FIÈREMENT CANADIEN

Professional Tools Special Fall 2024

Offers expire December 31, 2024



93120

12 Drawer Top Chest - PRO+ Series

- 26" x 18³/₄" x 21"
- Capacity: 6,997 cu. in.
- List \$1,510.87

\$803⁹⁵



99808SB

8 Drawer Top Chest - Marquis Series

- 26" x 16" x 19¹/₄"
- Capacity: 5,453 cu. in.
- List \$1,326.79

\$705⁹⁵



93211

11 Drawer Roller Cabinet PRO+ Series

- 26¹/₂" x 19" x 42"
- Capacity: 11,307 cu. in.
- List \$2,055.14

\$1,093⁹⁵



99507SB

7 Drawer Roller Cabinet - Marquis Series

- 26¹/₂" x 18" x 39¹/₈"
- Capacity: 9,147 cu. in.
- List \$1,783.63

\$948⁹⁵



99113SB

13 Drawer Roller Cabinet - Marquis Series

- 53³/₈" x 24" x 39¹/₂"
- Capacity: 25,500 cu. in.
- List \$7,774.77

\$4,136⁹⁵

Pro+ Series Toolbox Features:

- 100 lbs bearing slides on all drawers.
- Completely redesigned locking system with tubular key and steel double hook engagement system.
- Smooth and quiet rolling premium 5" x 2" casters with precision sealed bearings and 360° top brake.
- Heavy-duty 18 gauge steel frame for superior durability.
- Drawer liners included on all models.
- Scratch and corrosion resistant powder coat paint finish.
- Redesigned side handle that makes moving roller cabinets easier and more comfortable.

Marquis Series Toolbox Features:

- Safety latch system prevents drawers from accidentally opening.
- Heavy-duty roller bearing slides allow heavily loaded drawers to open and close with ease.
- Industrial black wrinkle finish offers superior scratch and fade resistance.
- Drawer liners included.
- Heavy gauge steel construction for greater load ratings and storage capacities.
- Premium quality casters with greater load ratings allow easier movement on all surfaces.
- Oval handles on roller cabinets allow comfortable gripping and maneuvering.
- Heavy-duty lifting handles with 90° stop for easy lifting of top chests.
- Gas shocks assist in opening and closing lids on top chests (41¹/₂" & 53³/₈" models only).



Industrial / Commercial Maintenance Supplies and Equipment

680 Tradewind Drive, Unit 4, Ancaster, Ontario L9G 4V5
(905) 529-3861 | sales@ttliquid.com | www.ttliquid.com

Torx® is a registered trademark of Textron.
Phillips® is a registered trade mark of Phillips Screw Co.

We reserve the right to make changes without notice and accept no liabilities for mistakes and printing errors. All taxes extra.



35038DH
38 Piece 1/2" Drive SAE & Metric Socket & Attachment Set

- 12 Point
 - Reg: 3/8" - 1 1/8", 1 1/4"
 - Reg: 10-24, 27, 30, 32mm
 - 40 Tooth Ratchet
 - 2", 5" & 10" Extension
 - 15" Flex Handle
 - U-Joint
- List \$1,016.64
\$653⁹⁵



35057
7 Piece 1/2" Drive SAE Double Square Impact Socket Set

- 3/8", 7/16", 1/2", 9/16", 5/8", 11/16", 3/4"
 - 8 Pt., Black industrial finish with socket bar
- List \$148.19
\$94⁹⁵



PL13T
13 Piece 1/2" Dr. SAE Deep Impact Socket Set

- 1/2" - 1 1/4"
 - 6 Pt., Black industrial finish with socket bar.
- List \$399.13
\$256⁹⁵



29026
26 Piece 3/8" Dr. 6 Point Standard & Deep Metric Socket & Attachment Set

- Standard 9, 10, 11, 12, 13, 14, 15, 16, 17, 18, 19mm
 - Deep 9, 10, 11, 12, 13, 14, 15, 16, 17, 18, 19mm
 - Reversible Ratchet
 - U-Joint
 - 3" & 6" Extension
- List \$573.29
\$368⁹⁵



25708
8 Piece 3/8" Dr. Torx® Hex Head Socket Set

- T15, T20, T25, T27, T30, T40, T45, T50
 - Mirror chrome finish with socket bar
- List \$175.10
\$112⁹⁵



P8T
8 Piece 3/8" Dr. Standard SAE Impact Socket Set

- 5/16" - 3/4"
 - 6 Pt., Industrial black finish with socket bar
- List \$88.87
\$57⁹⁵

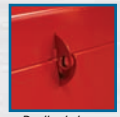
46805
5 Piece 3/4" Dr. Metric Hex Head Socket Set

- 14, 17, 19, 22, 24mm
 - Precision tip ensures a tight and secure fit with the fastener.
 - Industrial black finish with socket bar
- List \$416.85
\$267⁹⁵



9120
20" Heavy Duty Tool Box

- 20" x 8 1/2" x 9 1/2"
 - Capacity: 1,621 cu. in.
 - Tote tray included
- List \$125.45
\$66⁹⁵



Padlock hasp



Speeders

- Chrome finish for maximum resistance against corrosion.
- Diamond knurled grip for a more secure grip.

	Drive	Length	List	
T9	3/8"	16 1/4"	\$51.55	\$33⁹⁵
686	1/2"	19 1/4"	\$87.38	\$56⁹⁵



Flex Handles

- Chrome finish for maximum resistance against corrosion.
- Spring-loaded ball ensures a positive lock with socket.

	Drive	Finish	Length	List	
V26	1/4"	Mirror Chrome	5 1/2"	\$43.48	\$27⁹⁵
T30	3/8"	Mirror Chrome	9"	\$49.51	\$31⁹⁵
653	1/2"	Mirror Chrome	15"	\$99.37	\$63⁹⁵
653L	1/2"	Mirror Chrome	18"	\$100.26	\$64⁹⁵
4288	3/4"	Mirror Chrome	21"	\$165.10	\$106⁹⁵
X106	1"	Satin Chrome	26"	\$462.64	\$297⁹⁵



Side Cutting Pliers with Vinyl Grips

	Jaw Length	Overall Length	List	
B245B	3/4"	5 3/4"	\$45.96	\$29⁹⁵
B246B	3/4"	7"	\$56.06	\$36⁹⁵
B247B	3/4"	8"	\$59.16	\$38⁹⁵
B249B	3/4"	10"	\$86.56	\$54⁹⁵



45° Curved Needle Nose Pliers with Cutter

	Jaw Length	Overall Length	List	
B238B	2"	6 1/4"	\$44.34	\$28⁹⁵
B239B	2 3/4"	8"	\$56.04	\$36⁹⁵



Straight Needle Nose Pliers with Cutter and Vinyl Grips

	Jaw Length	Overall Length	List	
B230B	1 1/2"	5 3/4"	\$45.42	\$29⁹⁵
B231B	2"	6 1/4"	\$46.67	\$29⁹⁵

- Needle nose design allows for improved reach and access in confined space applications.



Hose Pinch Off Pliers

	Overall Length	O.D. Capacity	List	
89855	9 1/4"	1 1/4"	\$58.04	\$37⁹⁵
89856	14"	2 1/2"	\$120.08	\$77⁹⁵



Lineman's Pliers with Cutter and Vinyl Grips

	Jaw Length	Overall Length	List	
B210B	1"	6 1/4"	\$54.20	\$34⁹⁵
B212B	1 1/4"	7"	\$58.94	\$37⁹⁵
B214B	1 3/8"	8"	\$64.06	\$41⁹⁵
B218B	1 5/8"	9"	\$73.55	\$47⁹⁵

- Precisely machined serrated teeth
- Quick and clean cuts
- Handle design delivers excellent cutting power



Duck Bill Pliers with Serrated Jaw

	Overall Length	Jaw Length	List	
B295A	8"	1 3/8"	\$48.97	\$31⁹⁵



- Precision HRC44 blades are designed to deliver maximum service life
- Cutting blades are fully replaceable
- Ideal for smooth cutting of rod, wire mesh, concrete form ties and rebar, cables and bolts
- Large, anti slip ergonomic handles provide efficient power transfer and controlled cutting

Heavy Duty Bolt Cutters

	Overall Length	Medium HRC 40	Hard HRC 44	List	
BC114A	13"	3/16"	-	\$121.91	\$78⁹⁵
BC118A	18"	1/4"	3/16"	\$179.80	\$114⁹⁵
BC124A	24"	5/16"	1/4"	\$229.90	\$147⁹⁵
BC130A	30"	3/8"	5/16"	\$303.42	\$194⁹⁵
BC136A	36"	7/16"	3/8"	\$379.58	\$244⁹⁵

BK-SET5-89

5 Piece General Service Set

Set Includes:

- 10" Locking Pliers - Straight Jaws
- 10" Locking Pliers - Curved Jaws
- 7" Locking Pliers - Curved Jaws with Wire Cutter
- 6" Locking Pliers - Long Nose
- 5" Locking Pliers - Curved Jaws
- Includes storage bag
- Epoxy resin coated
- Piano wire spring
- Drop forged jaws
- No pinch release lever

List \$216.80

\$139⁹⁵



83306

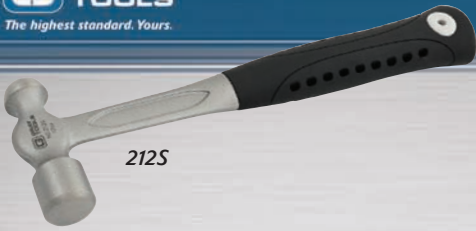
6 Piece Snap Ring Convertible Pliers Set

- Convertible from internal to external or vice versa without removing or tightening screws.
- Fixed tips are precision formed and hardened for accurate fit and long wear.
- Large cushion grips.
- Spring loaded to reduce fatigue.
- Includes plastic case

List \$319.15

\$204⁹⁵





212S

Ball Pein Hammers

	Head Weight	Overall Length	List	
208S	8 oz.	11"	\$46.19	\$29⁹⁵
212S	12 oz.	11"	\$49.25	\$31⁹⁵
216S	16 oz.	13"	\$65.72	\$42⁹⁵
224S	24 oz.	14"	\$73.14	\$47⁹⁵
232S	32 oz.	15"	\$81.27	\$52⁹⁵

- Forged one piece construction.
- Anti-vibration handle reduces fatigue.



PH61S

Club Hammers

	Head Weight	Overall Length	List	
PH60S	2½ lbs	11"	\$69.48	\$44⁹⁵
PH61S	4 lbs	11"	\$79.91	\$51⁹⁵

- Forged one piece construction
- Anti-vibration handle reduces fatigue.



Rubber Mallet

	Head Diameter	Overall Length	List	
PH30	2½"	16½"	\$72.48	\$46⁹⁵

- Non-marring, double-faced rubber head.



CF143

Inspection Mirrors

	Description	Length	List	
CF143	Pocket Circular with Clip, 1¼"	8"	\$16.41	\$9⁹⁵
CF144	Pocket Circular with Clip, 7/8"	7½"	\$16.41	\$9⁹⁵
CF145	Pocket Oval with Clip, 1" x 2"	8½"	\$16.41	\$9⁹⁵



CF146



CF147



89905

Telescopic Inspection Mirrors

	Description	Length	List	
CF146	Circular, 2¼"	10 - 14"	\$24.19	\$14⁹⁵
CF147	Rectangular: 2½" x 3½"	11¼"-15¼"	\$24.19	\$14⁹⁵
89905	Square: 1¾" x 1¾"	9"-35½"	\$30.90	\$19⁹⁵



C673

3 Piece Pinch Bar Set

- Lengths: 18", 24", 30"
- Nickel plated finish.
- Round shank.

List \$238.62

\$153⁹⁵



73903

3 Piece Acetate Handle Pry Bar Set

- Lengths: 13", 18¼", 24¼"
- Nickel plated blades.

List \$164.50

\$104⁹⁵



73913

3 Piece Orange Handle Pry Bar Set

- Overall Lengths: 13", 18¼", 24¼"
- Black oxide blades
- Includes plastic tray

List \$157.86

\$101⁹⁵



C5PPS

5 Piece Pin Punch Set

- 1/8", 5/32", 3/32", 3/16", 1/4"
- In a pouch.

List \$76.53

\$49⁹⁵



C49LR

5 Piece Punch & Chisel Set

- Flat Chisel: ½", ¾"
- Pin Punch: ⅛", ⅜"
- Centre Punch: ⅜"

List \$87.37

\$56⁹⁵



SE70C

7 Piece Straight Type Extractor Set

- Screw, bolt or stud size: ¼", ⅜", 7/16", ½", ⅝", ¾", 7/8"

List \$153.72

\$98⁹⁵

MC214
14 Piece Metric Combination Wrench Set

- 7mm - 32mm
- 12 Pt., Mirror chrome finish.
- Includes gripper organizer.

List \$935.82
\$601⁹⁵



Gray Crowfoot Wrenches

- Ideal where a traditional wrench or ratchet cannot reach.
- Precision machined for a tight and secure fit.
- Mirror chrome finish for maximum resistance against corrosion.

59704A
4 Piece SAE Double Box Fixed Head Multigear™ Geared Wrench Set

- 5/16" x 3/8", 7/16" x 1/2", 9/16" x 5/8", 11/16" x 3/4"
- Stainless steel construction
- Includes gripper organizer.

List \$254.66
\$163⁹⁵



63910
10 Piece 3/8" Dr. Metric Flare Nut Crowfoot Wrench Set

- 10mm - 19mm
- Includes socket bar

List \$154.47
\$99⁹⁵



65908
8 Piece 1/2" Dr. SAE Flare Nut Crowfoot Wrench Set

- 13/16" - 1 1/4"
- Includes socket bar

List \$473.82
\$304⁹⁵



MRB50
5 Piece Metric Ratcheting Box Wrench Set

- 6 Pt.: 7 x 8mm to 13 x 14mm
- 12 Pt.: 15 x 17mm
- Single & double hex flat style
- Chrome finish
- Includes gripper organizer

List \$241.55
\$154⁹⁵



59706A
6 Piece Metric Multigear™ Ratcheting Wrench Double Box Fixed Head

- 8 x 9mm, 10 x 11mm, 12 x 13mm, 14 x 15mm, 16 x 18mm, 17 x 19mm
- Stainless steel construction
- Includes gripper organizer.

List \$368.91
\$237⁹⁵



697513
13 Piece Metric Long Arm Ball S₂ Hex Key Set

- 1.5, 2, 2.5, 3, 4, 5, 5.5, 6, 8, 10, 12, 14, 17mm
- Includes metal storage case

List \$152.69
\$98⁹⁵

Ball-end for greater accessibility.



698513
13 Piece SAE Long Arm Ball S₂ Hex Key Set

- 1/16", 5/64", 3/32", 1/8", 5/32", 3/16", 7/32", 1/4", 5/16", 3/8", 1/2", 9/16", 5/8"
- Includes metal storage case

List \$151.47
\$97⁹⁵

Up to 33% more torque than ordinary keys.

68713XL
13 Piece SAE Extra Long Arm S₂ Hex Key Wrench Set

- 0.05" - 3/8"

List \$36.92
\$23⁹⁵



68709XL
9 Piece Metric Extra Long Arm S₂ Hex Key Wrench Set

- 1.5mm - 10mm

List \$35.05
\$22⁹⁵



SCD6

6 Piece Assorted Screwdriver Set

- Slotted 8 1/4" & 10 1/4" long
- Square Recess No. 1, 9 3/4" long
- Square Recess No. 2, 9 3/4" long
- Phillips® No. 1, 6 3/4" long
- Phillips® No. 2, 8 1/4" long

List \$111.15
\$71⁹⁵



TXS7A

7 Piece Heavy-Duty Comfort Grip Torx® Screwdriver Set

- Sizes: T8, T10, T15, T20, T25, T27, T30
- Industrial grade alloy on hex shank steel blade.
- Full length blade with hex bolster goes through handle to end cap.
- Tip style and size etched on end cap.
- Includes plastic tray.

List \$108.07
\$69⁹⁵



CHS7A

7 Piece SAE Nut Driver Set

- Sizes: 3/16", 1/4", 5/16", 11/32", 3/8", 7/16", 1/2"
- Color-coded handles make identifying the needed size quicker and easier.
- Chrome plated blades for maximum resistance against corrosion.
- Go through shank accommodates long length bolts.
- In a canvas roll.

List \$149.43

\$96⁹⁵



CHS7MA

7 Piece Metric Nut Driver Set

- Sizes: 5-11mm
- In a canvas roll
- Chrome plated blades for maximum resistance against corrosion.

List \$140.90
\$89⁹⁵



92460

Pocket Screwdriver with Clip

- 3" long blade
- 5 1/2" overall length

List \$7.24

\$4⁹⁵



IMD208K

6 Piece Impact Driver & Attachment Set

- 3/8" square drive impact driver.
- 5/16" hex bit adapter.
- No. 2 & 3 Phillips®, 1 7/16" long
- 5/16" & 3/8" Slotted 1 7/16" long.

List \$154.05

\$99⁹⁵



2612HS

6" Blade Mini Hacksaw

List \$20.01

\$12⁹⁵

838

Scraper

- Overall length 7 1/2"
- Blade width 1 1/4"

List \$22.17

\$14⁹⁵



66042

Plastic Pipe and Tube Cutter

- Capacity – Cuts up to 1 5/8" O.D.
- Ideal for cutting PE, PP, PB, PEX, PPR, MLP/MSR, VPE, CPVC, PVC, PVDF
- Quick blade change – no tools required

List \$115.37

\$74⁹⁵



66063

Plastic Pipe and Tube Cutter

- Capacity – Cuts up to 2 1/2" O.D.
- Ideal for cutting PE, PP, PB, PEX, PPR, MLP/MSR, VPE, CPVC, PVC, PVDF
- Quick blade change – no tools required

List \$171.16

\$109⁹⁵



213

Auto-Retracting Utility Knife

- Automatic blade return into housing for increased safety.
- Diecast light weight design for strength and durability.
- Ergonomic design for a comfortable hand grip.
- Works with most standard replacement blades.

List \$22.81

\$14⁹⁵





P293
Puller Bearing Separator Set
 • 5 ton capacity
 • Includes: 2 bearing separators: 2" and 3", puller, forged screw bolts and extensions.
 • Includes blow molded carrying case
 List \$337.31
\$216⁹⁵

PO12L
Adjustable 2/3 Jaw Puller
 • 7 Ton capacity
 • 8³/₄" Maximum reach
 • 11" Maximum spread
 • Jaw adjustment holes allow the reach to be customized to suit the application.
 List \$324.46
\$208⁹⁵



Heavy Duty 2 Jaw Pullers

	Capacity	Reach	Spread	List	
P202T	2 Ton	3"	3/4" - 4 1/2"	\$170.60	\$109⁹⁵
P205T	5 Ton	5 1/2"	1" - 9 1/2"	\$278.48	\$179⁹⁵
P210T	10 Ton	9"	1 1/16" - 15"	\$596.83	\$383⁹⁵



P210T



PO11
Reversible 2/3 Jaw Puller
 • 5 Ton capacity
 • 3 1/4" Maximum reach
 • 7" Maximum spread
 • Reversible jaws permit external or internal pulling.
 List \$203.92
\$131⁹⁵



VS150

Forged Combination Pipe Vises

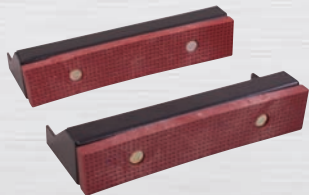
	Jaw Width	List	
VS150	150mm	\$848.39	\$544⁹⁵
VS200	200mm	\$1,130.30	\$726⁹⁵

- Equipped with permanent pipe jaws for holding pipes & tubes.
- Heavy duty hardened serrated jaws.
- Optional swivel base available.
- 92,000+ PSI

PO10A
Adjustable & Reversible 2/3 Jaw Puller
 • 2 Ton capacity
 • 3 3/8" Maximum reach
 • 4 3/4" Maximum spread
 List \$139.11
\$89⁹⁵



Fiber Grip Jaws (pair)



	Jaw width	List	
VS4-FGJAW	4.5"	\$52.83	\$33⁹⁵
VS5-FGJAW	5"	\$62.67	\$39⁹⁵
VS6-FGJAW	6"	\$69.19	\$44⁹⁵
VS8-FGJAW	8"	\$75.64	\$48⁹⁵

FG2
25 Blade Feeler Gauge



• Thickness, inches: .0015, .002, .003, .004, .005, .006, .007, .008, .009, .010, .011, .012, .013, .014, .015, .016, .018, .020, .022, .024, .025, .028, .030, .032, .035
 • 3" x 1/2" blades
 • Stainless steel blades
 List \$44.93
\$28⁹⁵

FG35A
35 Blade Feeler Gauge



• Full Range: .0015, .002, .003, .004, .005, .006, .007, .008, .009, .010, .011, .012, .013, .014, .015, .016, .017, .018, .019, .020, .021, .022, .023, .024, .025, .026, .027, .028, .029, .030, .031, .032, .033, .034, .035
 • 3" x 1/2" blades
 List \$78.42
\$49⁹⁵



91942

42 Piece Rethreading Kit

- 19 taps, 21 dies of NC, NF & metric sizes including 2 thread files.

List \$231.55
\$148⁹⁵



92340

40 Piece SAE Alloy Tap and Die Set

- Contains: 1" O.D. round dies: 4-40, 6-32, 8-32, 10-24, 10-32, 12-24, 1/4"-20, 1/4"-28, 5/16"-18, 5/16"-24, 3/8"-16, 3/8"-24, 7/16"-14, 7/16"-20, 1/2"-13, 1/2"-20, 1/8"-27 NPT
- 1 Die Stock, 1 Screw Pitch Gauge, 2 Tap Wrenches and 1 Screwdriver.
- Specially heat-treated alloy steel dies deliver superior durability and longer service life.

List \$302.29
\$194⁹⁵

89656

8 Piece I.S.O. Metric Bubble Flaring Tool Set

- 4 dies, yoke assembly, bar assembly, reamer and wrench.

List \$182.95
\$117⁹⁵

RF163

8 Piece Double Flaring Tool Set

- 5 dies, 3/16", 1/4", 5/16", 3/8", 1/2" O.D. tubing, yoke assembly, bar assembly, handle

List \$144.05
\$92⁹⁵



86025A

26 Foot Measuring Tape With Auto Lock

- 1" (25mm) wide powder coated nylon blade for superior durability
- Easy to read SAE and metric graphics
- Grappling hook
- Belt clip

List \$45.05
\$28⁹⁵



840

Wire Brush

- Overall length 14"

List \$9.85
\$6⁹⁵



DC6150

Digital Calipers - Metal Housing

Range List

DC6150 0 - 6"/0 - 150mm \$146.50 **\$94⁹⁵**

DC8200 0 - 8"/0 - 200mm \$212.54 **\$136⁹⁵**



In case

89703

Industrial Duty Circuit Tester Light

- 6 / 12 / 24 volt systems.
- 60" Rubber lead wire.
- Indicator bulb lights if circuit is functioning.
- Heavy-duty alligator clip.

List \$29.47
\$18⁹⁵



92129

29 Piece SAE Cobalt High Speed Steel Drill Bit Set

- 1/16" - 1/2" x 64ths
- Jobber length 135° split point,
- Grade: M35 Steel, Spec. NAS 907J
- Packaged in plastic case.

List \$460.83
\$296⁹⁵



Sockets not included.

Plastic Socket Organizers

- Holds regular & deep sockets

	Description	List	
91401	1/4" Dr. SAE	\$34.47	\$21⁹⁵
91402	1/4" Dr. Metric	\$34.47	\$21⁹⁵
93801	3/8" Dr. SAE	\$33.29	\$21⁹⁵
93802	3/8" Dr. Metric	\$33.29	\$21⁹⁵
91201	1/2" Dr. SAE	\$40.22	\$24⁹⁵
91202	1/2" Dr. Metric	\$40.22	\$24⁹⁵